



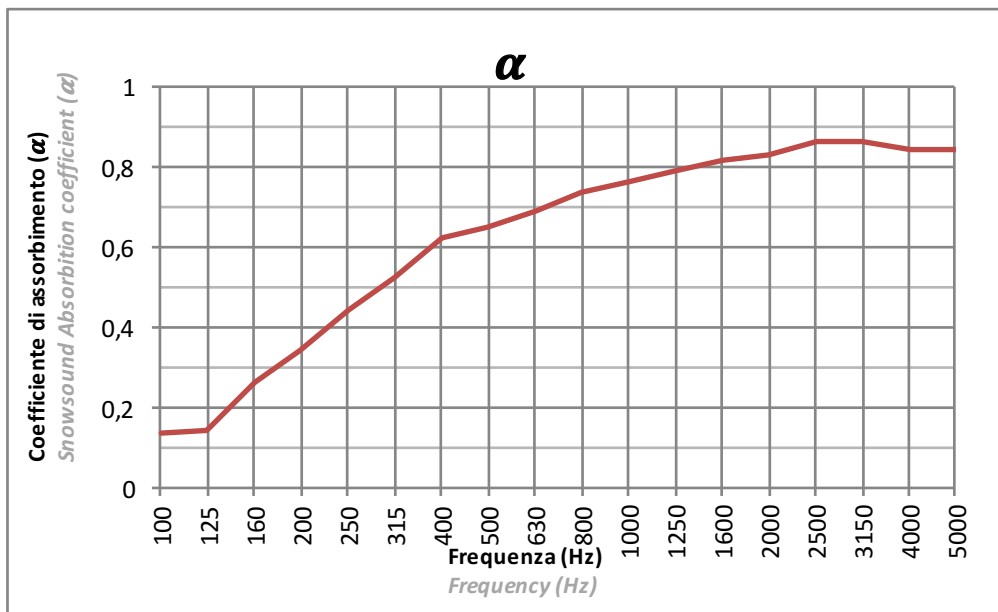
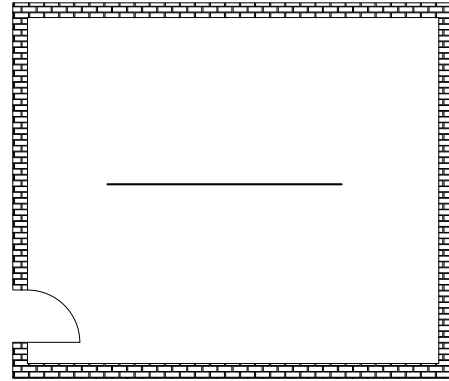




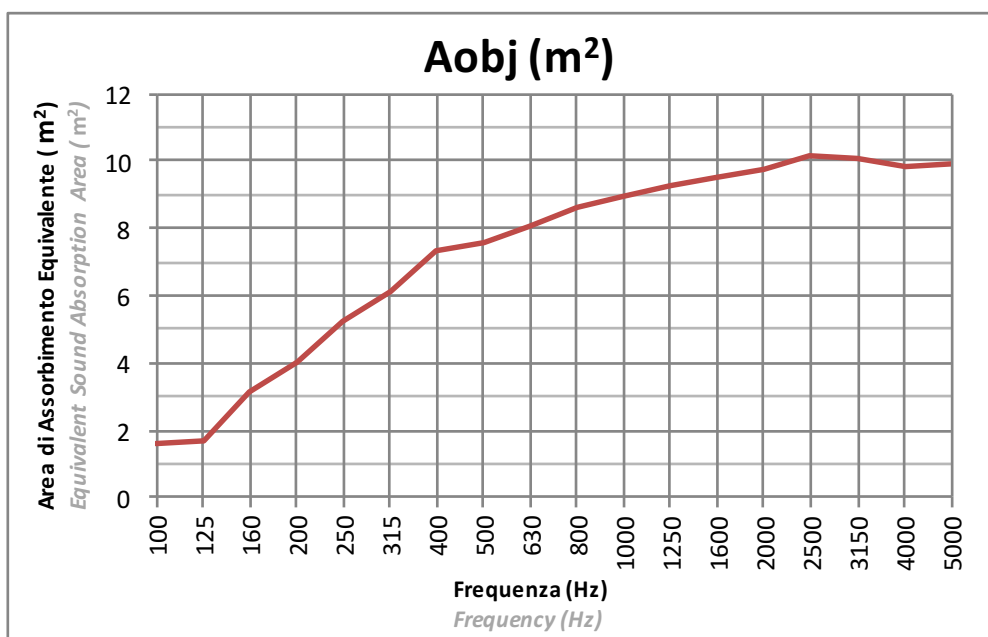


Tessuto: PLANARE  
Fabric: PLANAR

Installazione: CENTRO STANZA  
Installation: CENTER OF THE ROOM



Procedura Sperimentale  
Experimental Procedure



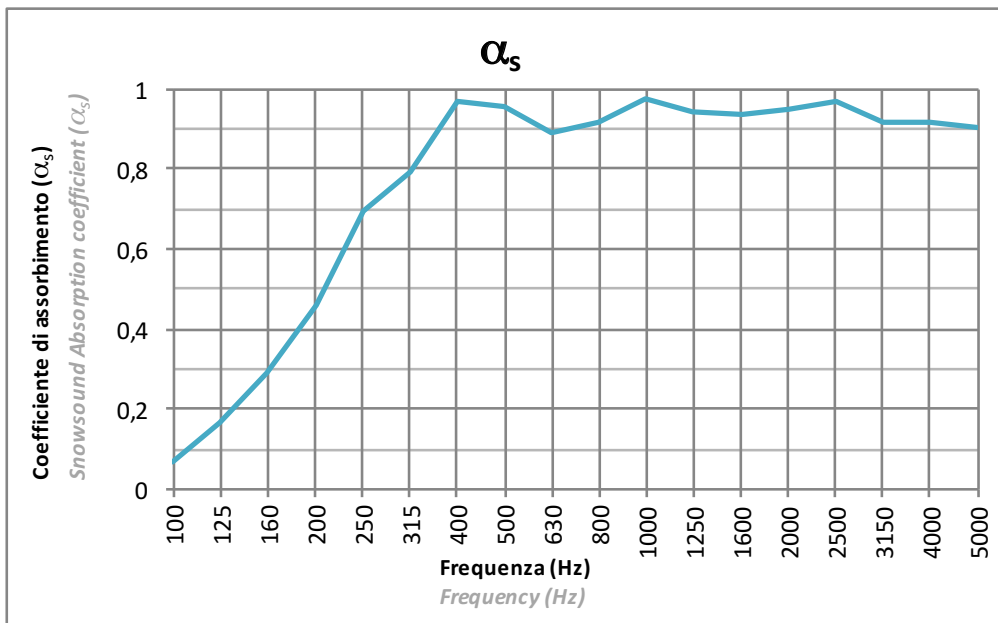
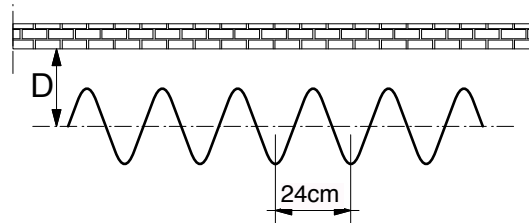
La prova è stata eseguita secondo le prescrizioni della norma UNI EN ISO 354  
Test executed according to UNI EN ISO 354

Tessuto: ONDULATO a passo 24cm

Fabric: WAVY (24cm pace)

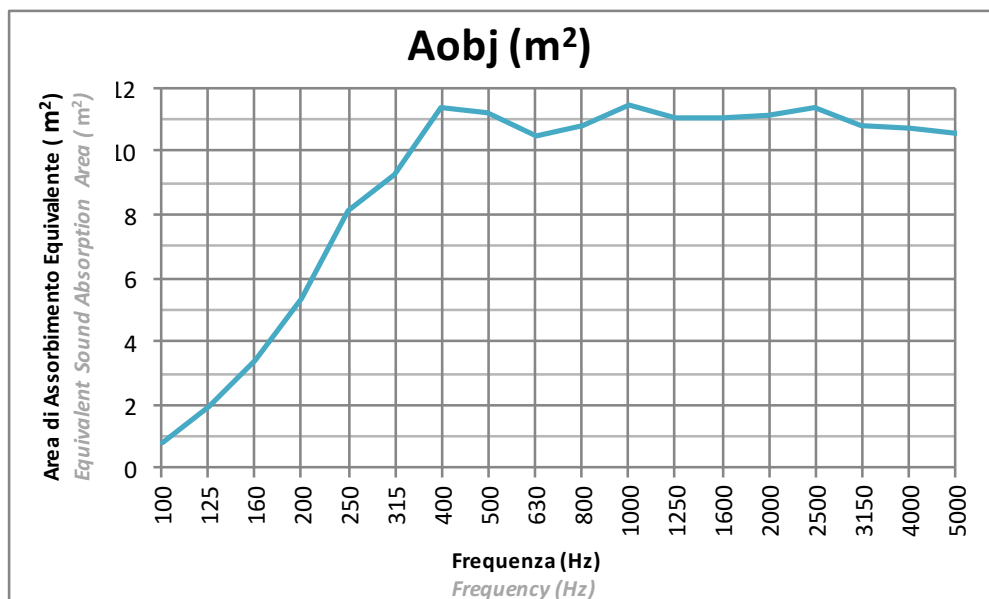
Installazione: Distanza dall'asse da parete 20cm (D=20cm)

Installation: Wall to axis distance 20cm (D=20cm)



La prova è stata eseguita secondo le prescrizioni della norma UNI EN ISO 354

Test executed according to UNI EN ISO 354

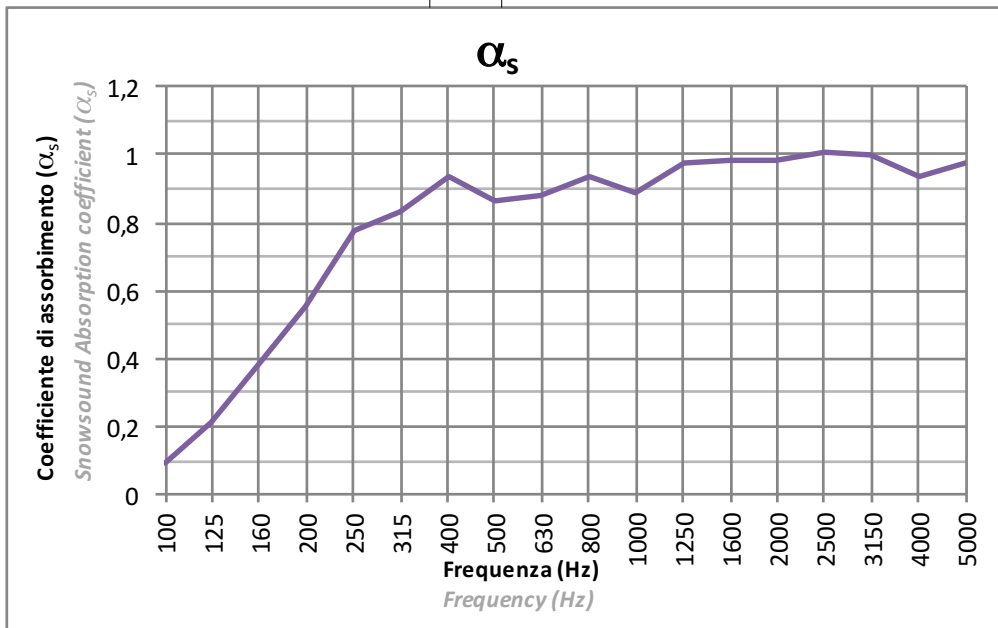
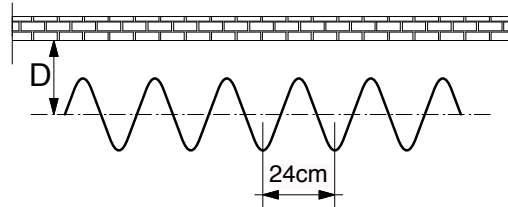


La prova è stata eseguita secondo le prescrizioni della norma UNI EN ISO 354

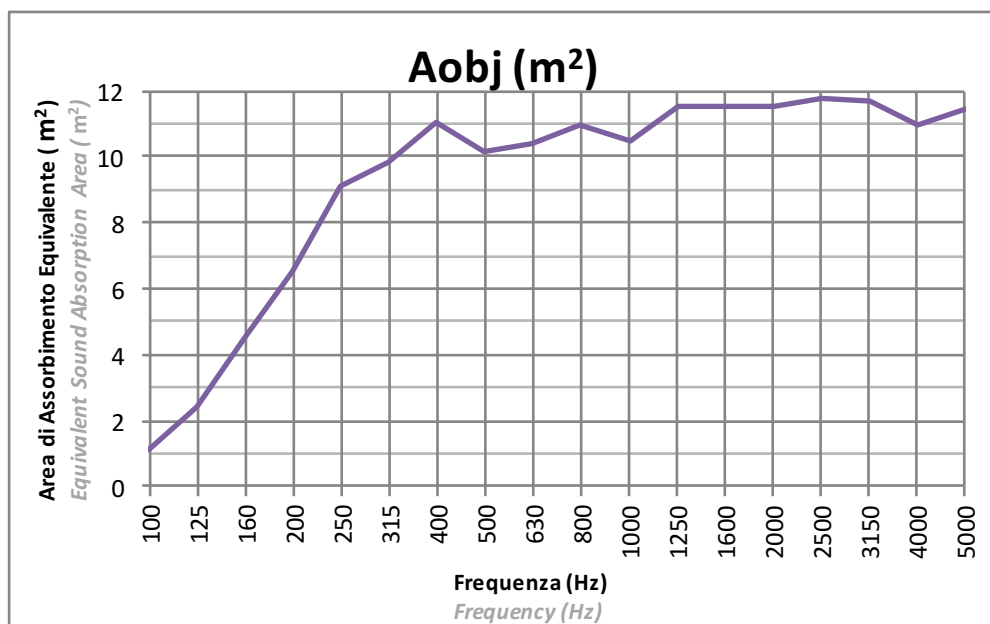
Test executed according to UNI EN ISO 354

Tessuto: ONDULATO a passo 24cm  
Fabric: WAVY (24cm pace)

Installazione: Distanza dall'asse da parete 30cm (D=30cm)  
Installation: Wall to axis distance 30cm (D=30cm)



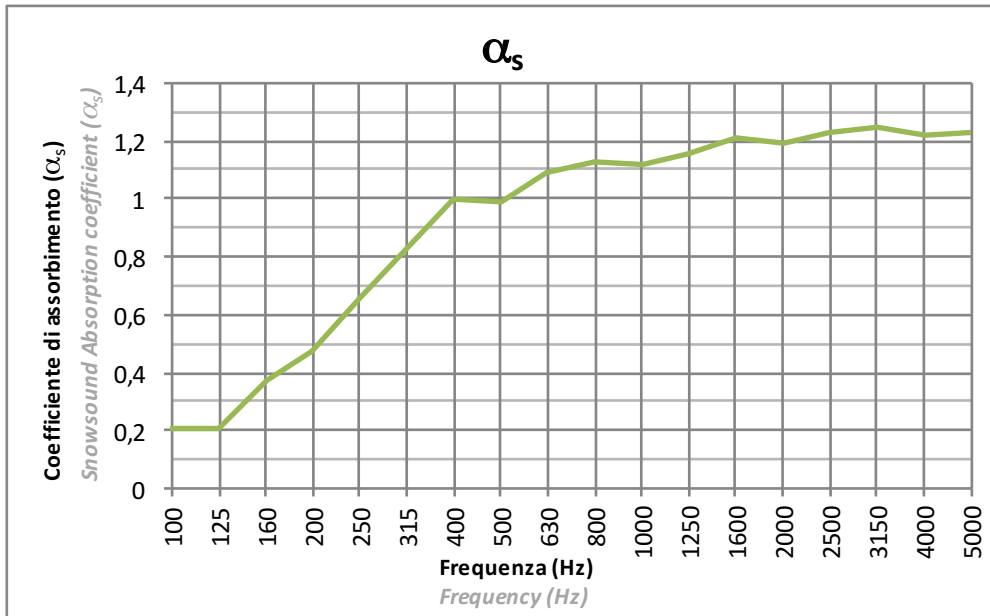
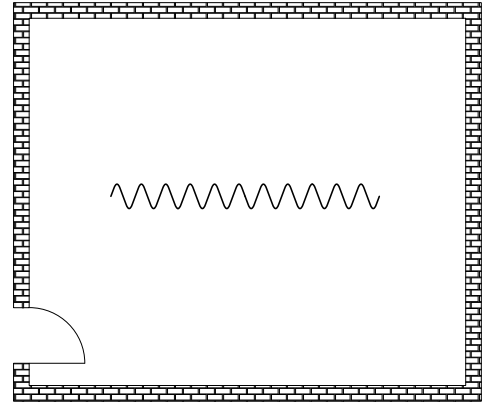
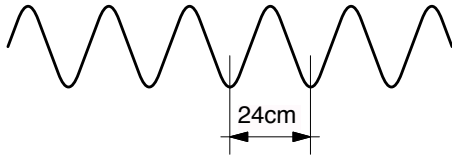
La prova è stata eseguita secondo le prescrizioni della norma UNI EN ISO 354  
Test executed according to UNI EN ISO 354



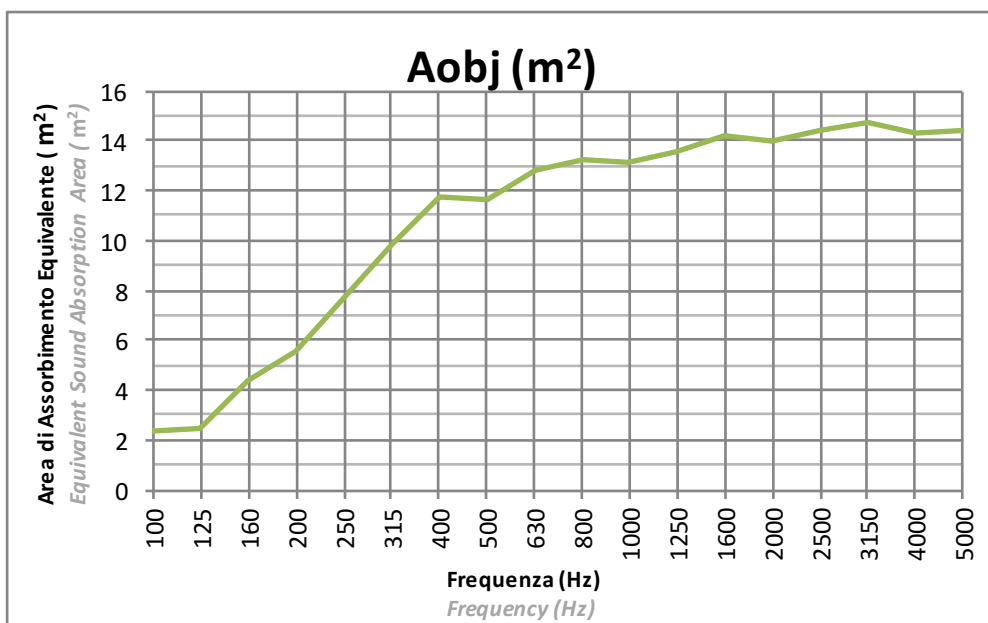
La prova è stata eseguita secondo le prescrizioni della norma UNI EN ISO 354  
Test executed according to UNI EN ISO 354

Tessuto: ONDULATO a passo 24cm  
Fabric: WAVY (24cm pace)

Installazione: CENTRO STANZA  
Installation: CENTER OF THE ROOM



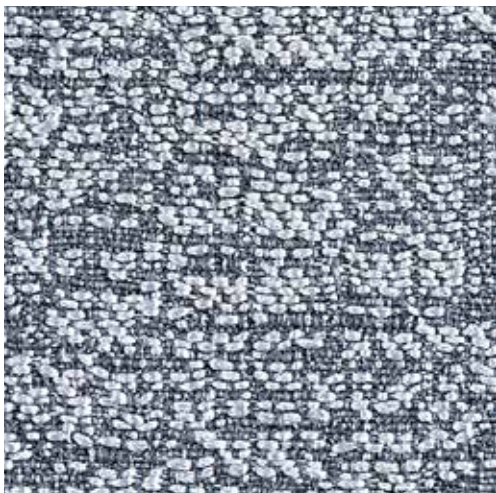
Procedura Sperimentale  
Experimental Procedure



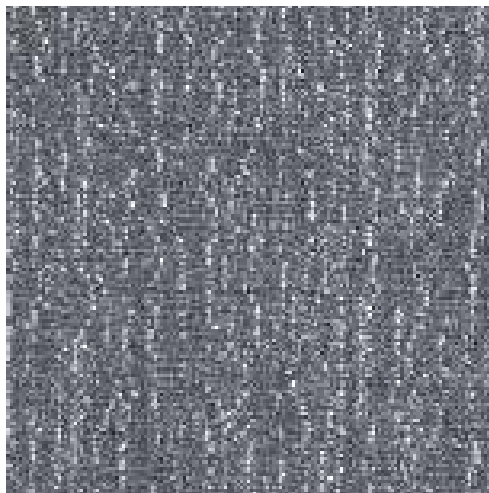
La prova è stata eseguita secondo le prescrizioni della norma UNI EN ISO 354  
Test executed according to UNI EN ISO 354



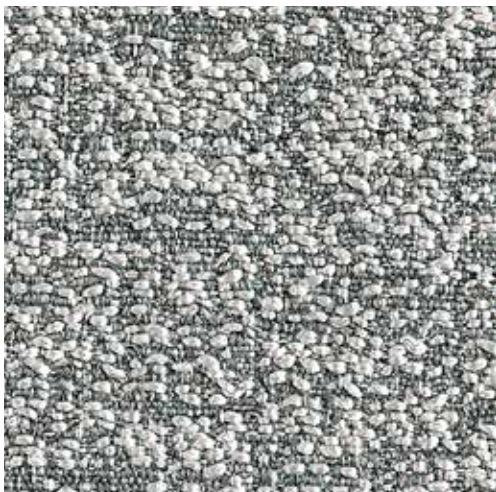
FIBER 8 BOUCLE'



801 FRONTE / FRONT



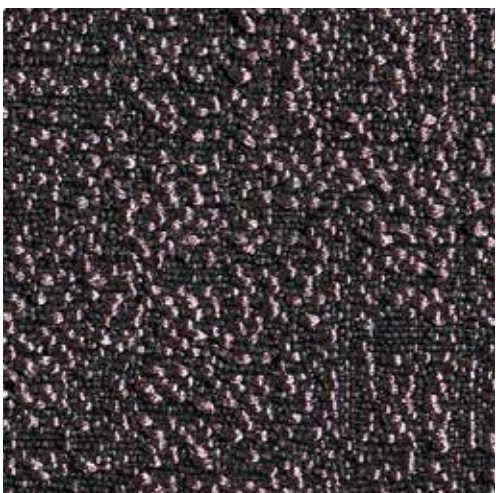
801 RETRO / BACK



802 FRONTE / FRONT



802 RETRO / BACK



800 FRONTE / FRONT



800 RETRO / BACK

Deze informatie is afkomstig van de website van Zero-Z design / Akoestiekexpert.nl.

Voor vragen, toelichting en meer informatie kunt u contact opnemen met:

**Zero-Z design**

Jasmijnstraat 6a

3732 EC De Bilt

**T** +31 (0)30 2201297

**F** +31 (0)30 2210692

**E** [info@zero-z-design.nl](mailto:info@zero-z-design.nl)

**W** [www.zero-z-design.nl](http://www.zero-z-design.nl)

[www.akoestiekexpert.nl](http://www.akoestiekexpert.nl)

