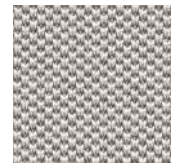


maxdesign

STOFKLEUREN 2024

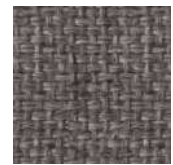
Fabrics



Fabric CAT. A
Fidivi One
8532

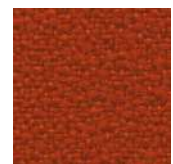


GENERAL FEATURES	
DESCRIPTION	Knitted fabric, 100% Recycled Polyester from bottles
COMPOSITION	100% Polyester Recycled
WEIGHT	525 g/lm – 350 g/lm
MECHANICAL PROPERTIES	
ABRASION RESISTANCE	100.000 Rubs
FASTNESS TO LIGHT	6 (blue scale)
FASTNESS TO RUBBING	4/5 (grey scale)



fabric CAT. A
Fidivi King L Kat
8011

GENERAL FEATURES	
DESCRIPTION	Soft melange fabric in two colour tone
COMPOSITION	100% Polyesther Trade Mark Trevira CS
WEIGHT	390g/ml – 280g/m ²
MECHANICAL PROPERTIES	
ABRASION RESISTANCE	80.000 Rubs
FASTNESS TO LIGHT	6 (blue scale)
FASTNESS TO RUBBING	4/5 (grey scale)



fabric CAT. A
Fidivi King Flex
4066

GENERAL FEATURES	
DESCRIPTION	Jacquard sablè fabric with elastic structure in two and three-coloured items. 52 colorways.
COMPOSITION	100% Polyester Trevira CS
WEIGHT	420 g/ml - 300 g/m ²
MECHANICAL PROPERTIES	
ABRASION RESISTANCE	100.000 Rubs
FASTNESS TO LIGHT	6 (blue scale)
FASTNESS TO RUBBING	4/5 (grey scale)

Fabrics



Fabric CAT. B
Gabriel Atlantic
63056

GENERAL FEATURES	
DESIGNER	Inger Mosholt Nielsen
COMPOSITION	100% Polyester
MECHANICAL PROPERTIES	
ENDURANCE	110,000 Martindale
FASTNESS TO LIGHT	5-7



fabric CAT. B
Gabriel Medley
66009

GENERAL FEATURES	
DESIGNER	Mette Krebs Petersen
COMPOSITION	100% Polyester
MECHANICAL PROPERTIES	
ENDURANCE	75,000 Martindale
FASTNESS TO LIGHT	5-7



fabric CAT. C
Kvadrat Floyd
663

GENERAL FEATURES	
DESIGNER	Åsa Pärson
COMPOSITION	45% New wool worsted, 50% Polyester, 5% Nylon
WEIGHT	370 g/lin.m
MECHANICAL PROPERTIES	
ABRASION RESISTANCE	50.000 Martindale
FASTNESS TO LIGHT	6-7 (ISO1-8)
FASTNESS TO RUBBING	4 (ISO 1-5)

Fabrics



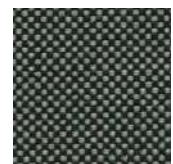
Fabric CAT. C
Kvadrat Hint
347

GENERAL FEATURES	
DESIGNER	Giulio Rodolfo
COMPOSITION	76% PVC - 22% PES - 2% PU
WEIGHT	300 g/lin.m
SUSTAINABILITY	Reduced environmental impact
MECHANICAL PROPERTIES	
FASTNESS TO LIGHT	5



fabric CAT. D
Kvadrat Canvas 2
154

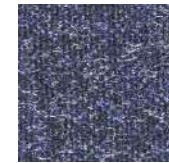
GENERAL FEATURES	
DESIGNER	Giulio Rodolfo
COMPOSITION	90% New wool worsted, 10% Nylon
WEIGHT	480 g/lin.m
SUSTAINABILITY	Label Ecolabel UE "The Flower"
MECHANICAL PROPERTIES	
ABRASION RESISTANCE	100.000 Martindale
FASTNESS TO LIGHT	5-7 (ISO)
PILLING	4 (EN ISO)



fabric CAT. D
Kvadrat Field 2
182

GENERAL FEATURES	
DESIGNER	Giulio Rodolfo
COMPOSITION	100% Trevira CS
WEIGHT	430 g/lin.m
SUSTAINABILITY	Reduced impact
MECHANICAL PROPERTIES	
ABRASION RESISTANCE	100.000 Martindale
FASTNESS TO LIGHT	6-7 (ISO)
PILLING	4 (EN ISO)

Fabrics



Fabric CAT. D
Kvadrat Melange Nap
791

GENERAL FEATURES	
DESIGNER	Akira Minagawa
COMPOSITION	97% New wool worsted, 3% Nylon
WEIGHT	440 g/lin.m
MECHANICAL PROPERTIES	
ABRASION RESISTANCE	60.000 Martindale
FASTNESS TO LIGHT	8 (ISO)
PILLING	3 (EN ISO)



fabric CAT. D
Kvadrat Re-Wool
768

GENERAL FEATURES	
DESIGNER	Margrethe Odgaard
COMPOSITION	45% Recycled wool, 45% New wool worsted, 10% Nylon
WEIGHT	540 g/lin.m
MECHANICAL PROPERTIES	
ABRASION RESISTANCE	50.000 Martindale
FASTNESS TO LIGHT	5-7 (ISO)
PILLING	4 (EN ISO)

Fabrics



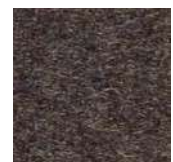
Fabric
CAT. D
Kvadrat Remix 3
183

GENERAL FEATURES	
DESIGNER	Giulio Rodolfo
COMPOSITION	90% New wool worsted, 10% Nylon
WEIGHT	415 g/lin.m
SUSTAINABILITY	Label Ecolabel UE "The Flower"
MECHANICAL PROPERTIES	
ABRASION RESISTANCE	100.000 Martindale
FASTNESS TO LIGHT	5-7 (ISO)
PILLING	4 (EN ISO)



Fabric
CAT. E
Kvadrat Divina 3
154

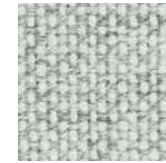
GENERAL FEATURES	
DESIGNER	F. Sködt
COMPOSITION	100% New wool
WEIGHT	840 g/lin.m
SUSTAINABILITY	Natural fibers
MECHANICAL PROPERTIES	
ABRASION RESISTANCE	45.000 Martindale
FASTNESS TO LIGHT	5-7 (ISO)
PILLING	3 (EN ISO)



Fabric
CAT. E
Kvadrat Divina MD
353

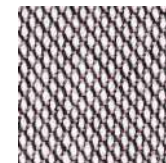
GENERAL FEATURES	
DESIGNER	F. Sködt
COMPOSITION	100% New wool
WEIGHT	840 g/lin.m
SUSTAINABILITY	Natural fibers
MECHANICAL PROPERTIES	
ABRASION RESISTANCE	45.000 Martindale
FASTNESS TO LIGHT	5-7 (ISO)
PILLING	3 (EN ISO)

Fabrics



Fabric
CAT. E
Kvadrat Hallingdal 65
110

GENERAL FEATURES	
DESIGNER	N. Ditzel
COMPOSITION	70% New wool / 30% Viscose
WEIGHT	795 g/lin.m
SUSTAINABILITY	Label Ecolabel UE "The Flower"
MECHANICAL PROPERTIES	
ABRASION RESISTANCE	100.000 Martindale
FASTNESS TO LIGHT	5-7 (ISO)
PILLING	3 (EN ISO)



Fabric
CAT. E
Kvadrat Steelcut Trio 3
105

GENERAL FEATURES	
DESIGNER	F. Dijkmeijer, G. Ridolfo
COMPOSITION	90% New wool, 10% Nylon
WEIGHT	770 g/lin.m
SUSTAINABILITY	Label Ecolabel UE "The Flower"
MECHANICAL PROPERTIES	
ABRASION RESISTANCE	100.000 Martindale
FASTNESS TO LIGHT	5-7 (ISO)
PILLING	4 (EN ISO)



Fabric
CAT. E
Kvadrat Tonus 4
240

GENERAL FEATURES	
DESIGNER	N. Koppel
COMPOSITION	90% New wool, 10% Helanca
WEIGHT	665 g/lin.m
SUSTAINABILITY	Natural fibers/Sustainable resource
MECHANICAL PROPERTIES	
ABRASION RESISTANCE	100.000 Martindale
FASTNESS TO LIGHT	5-7 (ISO)
PILLING	3 (EN ISO)

Fabrics



Fabric
CAT. E
Kvadrat Coda 2
0362

GENERAL FEATURES	
DESIGNER	Norway Says
COMPOSITION	90% new wool 10% nylon
WEIGHT	860 g/lin.m
SUSTAINABILITY	Greenguard Gold, HPD, EPD
MECHANICAL PROPERTIES	
ABRASION RESISTANCE	100.000 Martindale
FASTNESS TO LIGHT	6 (ISO 105-B02)
PILLING	4 (ISO 1-5)



Fabric
CAT. E
Kvadrat Vidar 4
0633

GENERAL FEATURES	
DESIGNER	Fanny Aronsen
COMPOSITION	94% new wool 6% nylon
WEIGHT	770 g/lin.m
SUSTAINABILITY	EU Ecolabel, Greenguard Gold, HPD, EPD
MECHANICAL PROPERTIES	
ABRASION RESISTANCE	100.000 Martindale
FASTNESS TO LIGHT	7 (ISO 105-B02)
PILLING	4 (ISO 1-5)

Leather

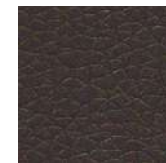


leather
CAT. F
Dani Panama
5320

DESCRIPTION

Leather is a material deriving from the skin of the animal, which has become rotproof, after the tanning process. Leather has highly resistance but especially hygienic features, especially suitable for the production of many objects of common use.

EcoLeather



ecoleather
CAT. A
Flukso Secret
1006

GENERAL FEATURES	
DESCRIPTION	Flame retardant coated fabric by Flukso®
COMPOSITION	76% PVC - 22% PES - 2% PU
WEIGHT	540+/- 10g/m ²
MECHANICAL PROPERTIES	
ABRASION RESISTANCE	60.000 Rubs
FASTNESS TO LIGHT	6/7 (blue scale)
FASTNESS TO RUBBING	4/5 (grey scale)

Deze informatie is afkomstig van de website van Zero-Z design / Akoestiekexpert.nl.

Voor vragen, toelichting en meer informatie kunt u contact opnemen met:

Zero-Z design

Jasmijnstraat 6a	Modem 20b
3732 EC De Bilt	7741 MJ Coevorden

T +31 (0)30 2201297

F +31 (0)30 2210692

E info@zero-z-design.nl

W www.zero-z-design.nl

www.akoestiekexpert.nl

